

# ER Collets



## ER Collets & ER Collet Chucks

ER11			ER16				ER20					
Clamping Range	Standard \$22		Clamping Range	Standard \$31		Coolant Tight \$84		Clamping Range	Standard \$36		Coolant Tight \$96	
	EDP	Part #		EDP	Part #	EDP	Part #		EDP	Part #	EDP	Part #
.019-.039"	50172A	9010.11.01	.019-.039"	50182A	9010.16.01							
.039-.059"	50173A	9010.11.015	.039-.079"	13799A	9010.16.02			.039-.079"	13785A	9010.20.02		
.059-.079"	50174A	9010.11.02	.079-.118"	13800A	9010.16.03	13871A	9010.16.03TR	.079-.118"	13786A	9010.20.03	13966A	9010.20.03TR
.079-.098"	13400A	9010.11.025	.118-.157"	13801A	9010.16.04	13872A	9010.16.04TR	.118-.157"	13787A	9010.20.04	13967A	9010.20.04TR
.098-.118"	50175A	9010.11.03	.157-.197"	13802A	9010.16.05	13873A	9010.16.05TR	.157-.197"	13788A	9010.20.05	13968A	9010.20.05TR
.118-.138"	50176A	9010.11.035	.197-.236"	13803A	9010.16.06	13874A	9010.16.06TR	.197-.236"	13789A	9010.20.06	13969A	9010.20.06TR
.138-.157"	13403A	9010.11.04	.236-.276"	13804A	9010.16.07	13875A	9010.16.07TR	.236-.276"	13790A	9010.20.07	13970A	9010.20.07TR
.157-.177"	50177A	9010.11.045	.276-.315"	13805A	9010.16.08	13876A	9010.16.08TR	.276-.315"	13791A	9010.20.08	13971A	9010.20.08TR
.177-.197"	50178A	9010.11.05	.315-.354"	13806A	9010.16.09	13877A	9010.16.09TR	.315-.354"	13792A	9010.20.09	13972A	9010.20.09TR
.197-.217"	50179A	9010.11.055	.354-.394"	13807A	9010.16.10	13878A	9010.16.10TR	.354-.394"	13793A	9010.20.10	13973A	9010.20.10TR
.217-.236"	13407A	9010.11.06						.394-.433"	13794A	9010.20.11	13974A	9010.20.11TR
.236-.256"	50780A	9010.11.065						.433-.472"	13795A	9010.20.12	13975A	9010.20.12TR
.256-.276"	50181A	9010.11.07						.472-.512"	13796A	9010.20.13	13976A	9010.20.13TR

ER25			ER32				ER40							
Clamping Range	Standard \$23		Coolant Tight \$60		Clamping Range	Standard \$23		Coolant Tight \$62		Clamping Range	Standard \$32		Coolant Tight \$69	
	EDP	Part #	EDP	Part #		EDP	Part #	EDP	Part #		EDP	Part #	EDP	Part #
.039-.079"	50184A	9010.25.02												
.079-.118"	13899A	9010.25.03	13901A	9010.25.03TR	.079-.118"	13819A	9010.32.03	13921A	9010.32.03TR	.079-.118"	13837A	9010.40.03	13940A	9010.40.03TR
.118-.157"	13898A	9010.25.04	13902A	9010.25.04TR	.118-.157"	13820A	9010.32.04	13922A	9010.32.04TR	.118-.157"	13838A	9010.40.04	13941A	9010.40.04TR
.157-.197"	13897A	9010.25.05	13903A	9010.25.05TR	.157-.197"	13821A	9010.32.05	13923A	9010.32.05TR	.157-.197"	13839A	9010.40.05	13942A	9010.40.05TR
.197-.236"	13808A	9010.25.06	13904A	9010.25.06TR	.197-.236"	13822A	9010.32.06	13924A	9010.32.06TR	.197-.236"	13840A	9010.40.06	13943A	9010.40.06TR
.236-.276"	13809A	9010.25.07	13905A	9010.25.07TR	.236-.276"	13823A	9010.32.07	13925A	9010.32.07TR	.236-.276"	13841A	9010.40.07	13944A	9010.40.07TR
.276-.315"	13810A	9010.25.08	13906A	9010.25.08TR	.276-.315"	13824A	9010.32.08	13926A	9010.32.08TR	.276-.315"	13842A	9010.40.08	13945A	9010.40.08TR
.315-.354"	13811A	9010.25.09	13907A	9010.25.09TR	.315-.354"	13825A	9010.32.09	13927A	9010.32.09TR	.315-.354"	13843A	9010.40.09	13946A	9010.40.09TR
.354-.394"	13812A	9010.25.10	13908A	9010.25.10TR	.354-.394"	13826A	9010.32.10	13928A	9010.32.10TR	.354-.394"	13844A	9010.40.10	13947A	9010.40.10TR
.394-.433"	13813A	9010.25.11	13909A	9010.25.11TR	.394-.433"	13827A	9010.32.11	13929A	9010.32.11TR	.394-.433"	13845A	9010.40.11	13948A	9010.40.11TR
.433-.472"	13814A	9010.25.12	13910A	9010.25.12TR	.433-.472"	13828A	9010.32.12	13930A	9010.32.12TR	.433-.472"	13846A	9010.40.12	13949A	9010.40.12TR
.472-.512"	13815A	9010.25.13	13911A	9010.25.13TR	.472-.512"	13829A	9010.32.13	13931A	9010.32.13TR	.472-.512"	13847A	9010.40.13	13950A	9010.40.13TR
.512-.551"	13816A	9010.25.14	13912A	9010.25.14TR	.512-.551"	13830A	9010.32.14	13932A	9010.32.14TR	.512-.551"	13848A	9010.40.14	13951A	9010.40.14TR
.551-.591"	13817A	9010.25.15	13913A	9010.25.15TR	.551-.591"	13831A	9010.32.15	13933A	9010.32.15TR	.551-.591"	13849A	9010.40.15	13952A	9010.40.15TR
.591-.630"	13818A	9010.25.16	13914A	9010.25.16TR	.591-.630"	13832A	9010.32.16	13934A	9010.32.16TR	.591-.630"	13850A	9010.40.16	13953A	9010.40.16TR
					.630-.669"	13833A	9010.32.17	13935A	9010.32.17TR	.630-.669"	13851A	9010.40.17	13954A	9010.40.17TR
					.669-.709"	13834A	9010.32.18	13936A	9010.32.18TR	.669-.709"	13852A	9010.40.18	13955A	9010.40.18TR
					.709-.748"	13835A	9010.32.19	13937A	9010.32.19TR	.709-.748"	13853A	9010.40.19	13956A	9010.40.19TR
					.748-.787"	13836A	9010.32.20	13938A	9010.32.20TR	.748-.787"	13854A	9010.40.20	13957A	9010.40.20TR
										.787-.827"	13855A	9010.40.21	13958A	9010.40.21TR
										.827-.866"	13856A	9010.40.22	13959A	9010.40.22TR
										.866-.906"	13857A	9010.40.23	13960A	9010.40.23TR
										.906-.945"	13858A	9010.40.24	13961A	9010.40.24TR
										.945-.984"	13859A	9010.40.25	13962A	9010.40.25TR
										.984-1.024"	13860A	9010.40.26	13963A	9010.40.26TR



Manufactured to European  
DIN Standard 6499

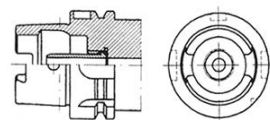


# ER Collet Chucks



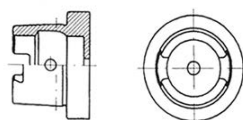
## HSK Form A

Automatic Tool Change.  
Most Common HSK Form.



## HSK Form C

Manual Tool Change, front Clamping.  
For use with tool extensions and short spindles on transfer lines.



### Advantages of HSK

- An international industry standard which results in more competitive prices with many suppliers to choose from.
- Stiffer and more rigid connection between the tool and spindle.
- Higher spindle speeds are possible because the taper is gripped from the inside.
- Higher speeds actually increase clamping force.
- Excellent repeatability and accuracy.
- Improved rigidity for long tools.
- Tools rest in clamped position on the flange.
- Faster tool change is possible because of the short tool taper.
- Tool clamping stresses are confined to the front of the spindle.

## HSK Shanks

EDP	Part Number	Taper	Size	Collet Range	D	L	Price
<b>HSK 32 Form A+C</b>							
51027C	1218.16.H32A	32A	ER16	.019-.394"	0.870"	3.150	\$299
EDP	Part Number	Taper	Size	Collet Range	D	L	Price
<b>HSK 40 Form A+C</b>							
51028C	1218.16.H40A	40A	ER16	.019-.394"	0.870"	3.150"	\$266
51030C	1198.25.H40AN	40A	ER25	.039-.394"	1.650"	3.150"	\$285
51032C	1198.32.H40AN	40A	ER32	.079-.787"	1.970"	3.940"	\$285
EDP	Part Number	Taper	Size	Collet Range	D	L	Price
<b>HSK 50 Form A+C</b>							
51033C	1218.16.H50A	50A	ER16	.019-.394"	0.866"	3.937"	\$270
51034C	1198.25.H50AN	50A	ER25	.039-.630"	1.654"	3.937"	\$270
51035C	1198.32.H50AN	50A	ER32	.079-.787"	1.969"	3.937"	\$270
EDP	Part Number	Taper	Size	Collet Range	D	L	Price
<b>HSK 63 Form A+C</b>							
11413C	1218.16.H63A	63A	ER16	.019-.394"	0.866"	3.937"	\$270
11414C	1198.25.H63AN	63A	ER25	.039-.630"	1.654"	3.937"	\$285
11415C	1198.32.H63AN	63A	ER32	.079-.787"	1.969"	3.937"	\$285
11416C	1198.40.H63AN	63A	ER40	.079-1.024"	2.480"	4.724"	\$275
EDP	Part Number	Taper	Size	Collet Range	D	L	Price
<b>HSK 100 Form A+C</b>							
51036C	1218.16.H100A	100A	ER16	.019-.394"	0.866"	6.300"	\$399
51037C	1198.32.H100AN	100A	ER32	.079-.787"	1.969"	3.937"	\$400
51039C	1198.40.H100AN	100A	ER40	.079-1.024"	2.480"	4.724"	\$420
51038C	2198.32.H100AN	100A	ER32	.079-.787"	1.969"	6.300"	\$465
51040C	2198.40.H100AN	100A	ER40	.079-1.024"	2.480"	6.300"	\$465

Many more sizes available.

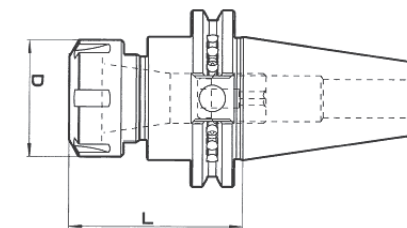


## CAT 40 Shanks

EDP	Part Number	D	L	Price
<b>ER11 Collet Range 0.019" - 0.276"</b>				
51010C	1196.11.40CATN	0.75"	2.50"	\$255.00
51011C	2196.11.40CATN	0.75"	4.00"	\$235.00
51012C	3196.11.40CATN	0.75"	6.00"	\$261.50
EDP	Part Number	D	L	Price
<b>ER20 Collet Range 0.039" - 0.512"</b>				
17391C	1196.20.40CATN	1.38"	2.50"	\$199.45
51014C	2196.20.40CATN	1.38"	4.00"	\$426.50
51015C	3196.20.40CATN	1.38"	6.00"	\$298.50
EDP	Part Number	D	L	Price
<b>ER32 Collet Range 0.079" - 0.787"</b>				
11012C	1196.32.40CATN	1.97"	3.00"	\$220.00
11013C	2196.32.40CATN	1.97"	5.00"	\$269.00
51017C	3196.32.40CATN	1.97"	8.00"	\$308.50
EDP	Part Number	D	L	Price
<b>ER16 Collet Range 0.019" - 0.394"</b>				
51013C	1196.16.40CATN	1.26"	2.50"	\$221.50
11006C	2196.16.40CATN	1.26"	3.00"	\$195.00
11007C	4196.16.40CATN	1.26"	6.00"	\$199.95
EDP	Part Number	D	L	Price
<b>ER25 Collet Range 0.118" - 0.630"</b>				
11008C	1196.25.40CATN	1.65"	2.50"	\$201.50
11009C	2196.25.40CATN	1.65"	4.00"	\$268.50
51016C	3196.25.40CATN	1.65"	8.00"	\$335.50
EDP	Part Number	D	L	Price
<b>ER40 Collet Range 0.079" - 1.024"</b>				
51018C	1196.40.40CATN	2.48"	3.50"	\$283.00
51019C	2196.40.40CATN	2.48"	6.00"	\$295.00

### CAT 40 & 50

ER collet chucks handle a wide range of machining jobs with a single holder. Choose the right size collet for the tool being used, set tool depth, and tighten the collet nut.



## CAT 50 Shanks

EDP	Part Number	D	L	Price
<b>ER20 Collet Range 0.039 - 0.512"</b>				
51020C	1196.20.50CATN	1.38"	4.00"	\$305.00
51021C	2196.20.50CATN	1.38"	6.00"	\$315.50
EDP	Part Number	D	L	Price
<b>ER32 Collet Range 0.079 - 0.787"</b>				
11031C	1196.32.50CATN	1.97"	4.00"	\$339.00
51023C	2196.32.50CATN	1.97"	6.00"	\$341.71
51024C	3196.32.50CATN	1.97"	8.00"	\$342.00
EDP	Part Number	D	L	Price
<b>ER16 Collet Range 0.019 - 0.394"</b>				
11025C	1196.16.50CATN	1.26"	4.00"	\$315.50
11026C	2196.16.50CATN	1.26"	5.00"	\$435.90
11027C	3196.16.50CATN	1.26"	6.00"	\$328.50
EDP	Part Number	D	L	Price
<b>ER40 Collet Range 0.079 - 1.024"</b>				
51025C	1196.40.50CATN	2.48"	4.00"	\$325.50
51026C	2196.40.50CATN	2.48"	6.00"	\$342.00